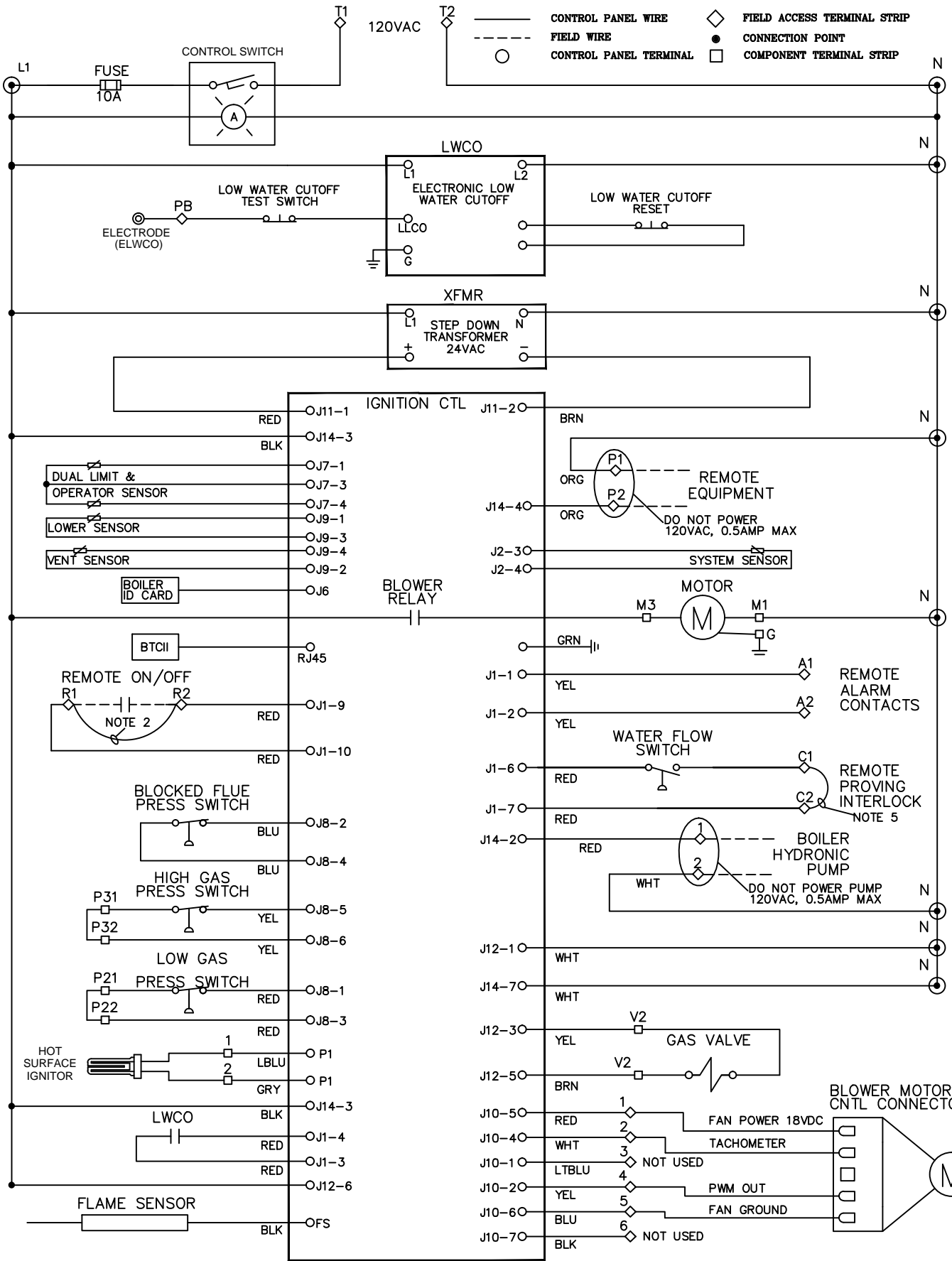
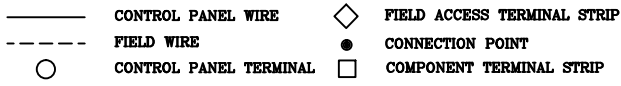


LEGEND



NOTES:

1. ALL FIELD WIRING MUST BE IN ACCORDANCE WITH THE REQUIREMENTS OF THE LOCAL CODES AND THE NATIONAL ELECTRICAL CODE, NFPA NO. 70, LATEST EDITION.
2. REMOVE JUMPER WHEN REMOTE ENABLE AND DISABLE CONTROL IS REQUIRED. USE MINIMUM 16 AWG WIRE FOR FIELD CONTROL CIRCUITS. THIS CIRCUIT IS 120VAC. USE CAUTION
3. CONNECT TO 30 AMPERE MAXIMUM BRANCH CIRCUIT.
4. ALL WIRING IS 18 AWG UNLESS NOTED. WHEN INSTALLED IN CANADA, ALL WIRING SHOULD BE DONE IN ACCORDANCE WITH THE CURRENT CANADIAN ELECTRICAL CODE.
5. REMOVE JUMPER WHEN REMOTE PROVING INTERLOCK IS REQUIRED. USE MINIMUM 16 AWG WIRE FOR FIELD CONTROL CIRCUITS.